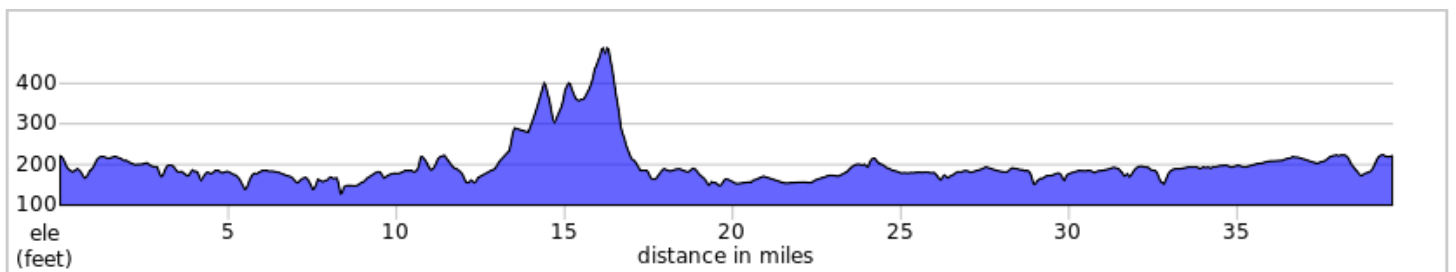
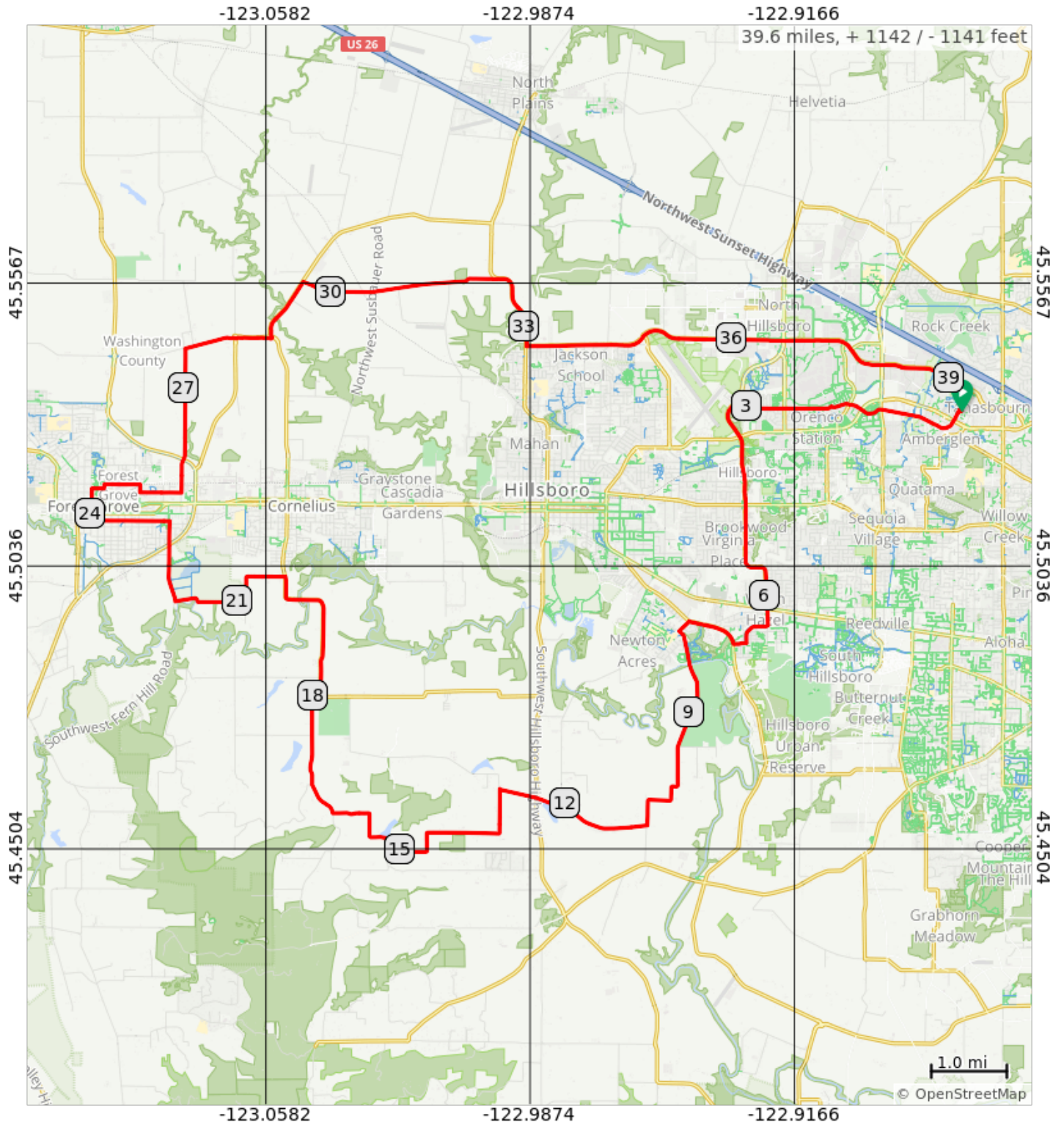


Dober Road To Maggie's Buns, PBC



Dober Road To Maggie's Buns, PBC

Num	Prev	Dist	Type	Note	Next
1.	0.0	0.0	📍	Start of route	0.0
2.	0.0	0.0	➡	R toward NW 194th Terrace	0.0
3.	0.0	0.0	⬅	L onto NW 194th Terrace	0.2
4.	0.2	0.2	⬆	Continue onto NW Amberwood Dr	1.0
5.	1.0	1.2	⬆	Continue onto NE Butler St	0.7
6.	0.7	1.9	⬆	At the traffic circle, continue straight to stay on NE Butler St	0.6
7.	0.6	2.5	⬆	Continue onto NE Airport Rd	0.7
8.	0.7	3.2	⬅	L onto NE Brookwood Pkwy	1.4
9.	1.4	4.6	⬅	NE Brookwood Pkwy turns slightly L and becomes SW Brookwood Ave	1.7

4.6 miles. +120/-158 feet

Num	Prev	Dist	Type	Note	Next
10.	1.7	6.4	⬆	At the traffic circle, take the 1st exit onto SE Alexander St	0.5
11.	0.5	6.8	➡	R onto SE Davis Rd	0.2
12.	0.2	7.0	➡	R onto SW River Rd	0.7
13.	0.7	7.7	⬅	L onto SE Rood Bridge Rd	0.2
14.	0.2	7.8	⬅	L to stay on SE Rood Bridge Rd	3.0
15.	3.0	10.9	➡	R onto SW Burkhalter Rd	1.2
16.	1.2	12.0	⬅	L to stay on SW Burkhalter Rd	0.4
17.	0.4	12.4	⬆	Continue onto SW Simpson Rd	0.5
18.	0.5	12.9	⬅	Sharp L onto SW Riedweg Rd	2.2
19.	2.2	15.1	➡	R onto Dober Rd	1.2

10.5 miles. +449/-256 feet

Num	Prev	Dist	Type	Note	Next
20.	1.2	16.4	➡	R onto SW Iowa Hill Rd	1.6
21.	1.6	18.0	➡	SW Iowa Hill Rd turns slightly R and becomes SW Tongue Ln	0.1
22.	0.1	18.1	⬅	L onto SW Golf Course Rd	2.0
23.	2.0	20.1	⬅	L onto SW Lafollett Rd	0.8
24.	0.8	20.9	➡	R onto SW Geiger Rd	0.9
25.	0.9	21.9	➡	R onto SW Fern Hill Rd	0.7
26.	0.7	22.6	⬆	Continue onto Maple St	0.3
27.	0.3	22.9	⬅	L onto 18th Ave	1.0
28.	1.0	23.9	➡	R onto Main St	0.4
29.	0.4	24.4	➡	R onto University Ave	0.2
30.	0.2	24.5	⬅	L onto Sunset Dr	0.1

9.4 miles. +127/-370 feet

Num	Prev	Dist	Type	Note	Next
31.	0.1	24.6	➡	R onto 23rd Ave	0.5
32.	0.5	25.0	➡	R onto Hawthorne St	0.1
33.	0.1	25.1	⬅	L onto 22nd Ave	0.5
34.	0.5	25.7	⬅	L onto Oak St	0.4
35.	0.4	26.1	⬆	Continue onto NW Porter Rd	1.4
36.	1.4	27.5	➡	R onto NW Verboort Rd	0.7
37.	0.7	28.2	⬆	At the traffic circle, continue straight to stay on NW Verboort Rd	0.5
38.	0.5	28.7	⬆	At the traffic circle, take the 2nd exit onto NW Cornelius Schefflin Rd	0.9
39.	0.9	29.6	➡	R onto NW Wren Rd	2.6
40.	2.6	32.2	⬆	Continue onto NW Glencoe Rd	1.1

7.7 miles. +143/-140 feet

Num	Prev	Dist	Type	Note	Next
41.	1.1	33.2	←	L onto NW Evergreen Rd	3.4
42.	3.4	36.7	↑	Continue onto NW Evergreen Pkwy	2.6
43.	2.6	39.3	→	R onto NW 194th Terrace	0.3
44.	0.3	39.6	←	L	0.0
45.	0.0	39.6	←	L	0.0
46.	0.0	39.6	📍	End of route	0.0

7.4 miles. +117/-86 feet