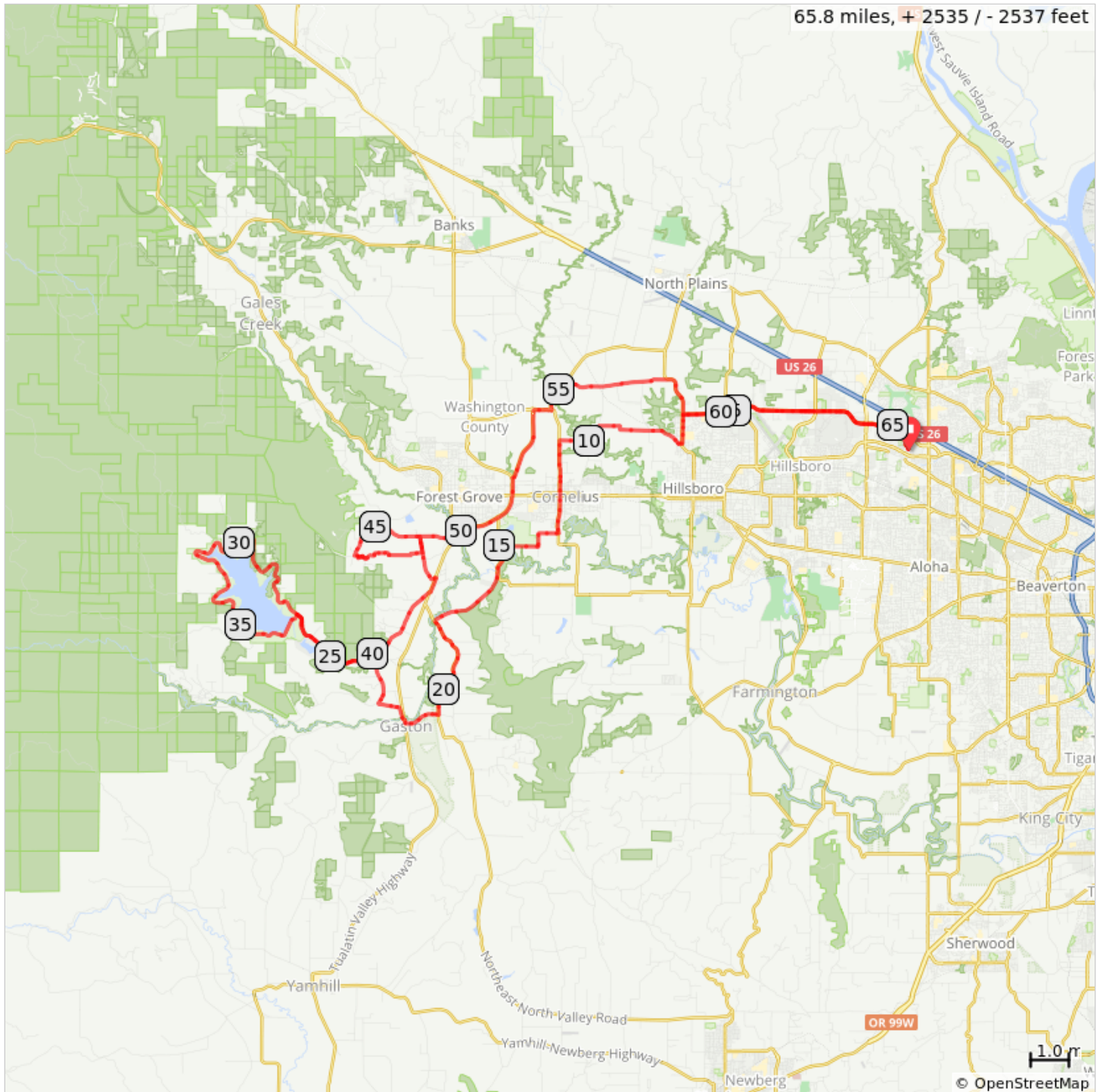


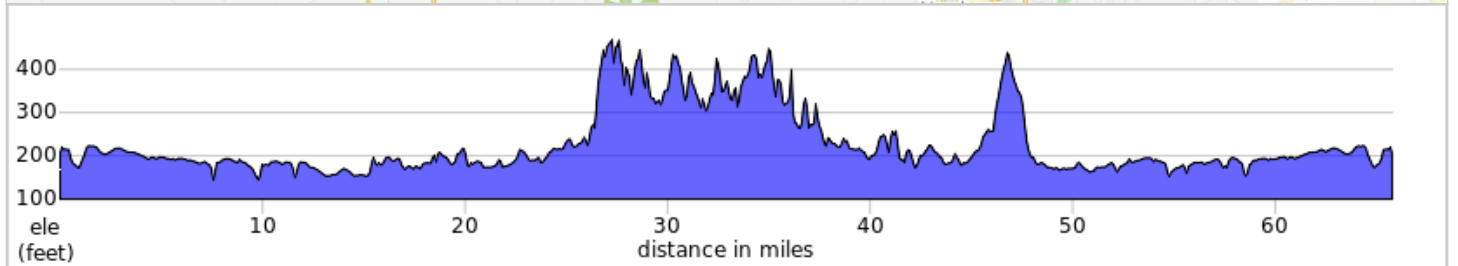
# Tanasbourne REI to Hagg Lake Loop v2



Refreshment break at Lake Stop store at the base of climb into/out of Hagg Lake.  
Added bonus climbs on Carpenter Creek Rd. and Plumee Rd. after circling Hagg Lake.



65.8 miles, + 2535 / - 2537 feet



Tanasbourne REI to Hagg Lake Loop v2

Num	Dist	Type	Note
1.	0.0	📍	Start of route
2.	0.0	➔	R
3.	0.1	←	L onto NW Venetian Dr
4.	0.4	←	L onto NW Evergreen Pkwy
5.	2.9	↑	Continue onto NW Evergreen Rd
6.	6.4	←	L onto NW Glencoe Rd
7.	7.1	➔	R onto NW Cory St
8.	7.2	➔	R onto NW Hornecker Rd
9.	9.4	←	L onto NW Susbauer Rd
10.	9.9	➔	R onto NW Long Rd
11.	10.8	←	L onto NW Cornelius Schefflin Rd
12.	13.0	↑	Continue onto SW Golf Course Rd
13.	13.2	➔	R onto SW Lafollett Rd
14.	14.0	➔	R onto SW Geiger Rd
15.	15.0	←	L onto SW Fern Hill Rd

15.0 miles. +294/-344 feet

Num	Dist	Type	Note
16.	17.8	←	Slight L onto SW Spring Hill Rd
17.	20.7	➔	R onto SW Gaston Rd
18.	21.6	➔	R onto Front St
19.	21.7	←	L onto Mill St/SW Old Highway 47
20.	22.1	←	L onto SW Bates Rd
21.	22.6	➔	R to stay on SW Bates Rd
22.	22.6	➔	R onto SW Patton Valley Rd
23.	22.9	↑	Continue straight onto SW Old Highway 47
24.	23.9	←	L onto SW Scoggins Valley Rd, Lake Stop Store for break
25.	30.8	↑	Continue onto SW West Shore Dr
26.	36.2	↑	Continue onto W Shore Dr
27.	36.9	➔	R onto SW Scoggins Valley Rd
28.	37.3	↑	Make a U-turn at W Shore Dr
29.	40.0	←	L onto SW Old Highway 47

25.0 miles. +1688/-1672 feet

Num	Dist	Type	Note
30.	40.8	↑	Continue straight to stay on SW Old Highway 47
31.	42.2	←	L onto OR-47 N
32.	42.6	←	L onto SW Dudley Ave
33.	42.7	➔	R onto SW Dilley Rd
34.	43.9	←	L onto SW Stringtown Rd
35.	44.7	←	L onto SW Carpenter Creek Rd
36.	45.5	←	L to stay on SW Carpenter Creek Rd
37.	46.0	←	L onto SW Plumlee Rd
38.	48.0	←	L onto SW Dilley Rd
39.	48.4	➔	R onto SW Stringtown Rd
40.	49.2	➔	R onto B St
41.	49.3	←	Slight L to stay on B St
42.	49.3	←	L onto OR-47 N
43.	52.1	➔	R onto NW Martin Rd
44.	54.0	↑	At the traffic circle, take the 1st exit onto NW Verboort Rd

14.0 miles. +525/-575 feet

Num	Dist	Type	Note
45.	54.4	↑	At the traffic circle, take the 2nd exit onto NW Cornelius Schefflin Rd
46.	55.3	➔	R onto NW Wren Rd
47.	57.9	↑	Continue onto NW Glencoe Rd
48.	59.0	←	L onto NW Evergreen Rd
49.	62.2	←	Keep L to stay on NW Evergreen Rd
50.	62.9	↑	Continue onto NE Evergreen Pkwy
51.	65.3	➔	R onto Northwest 194th /NE Amberglen Parkway to REI finish
52.	65.8	📍	End of route

11.8 miles. +251/-229 feet